



<https://www.PanLbilt.com>

# Genny California Models

Rapid Assembly  
Steel & Foam Cement  
Building Kits



pan**L**bilt

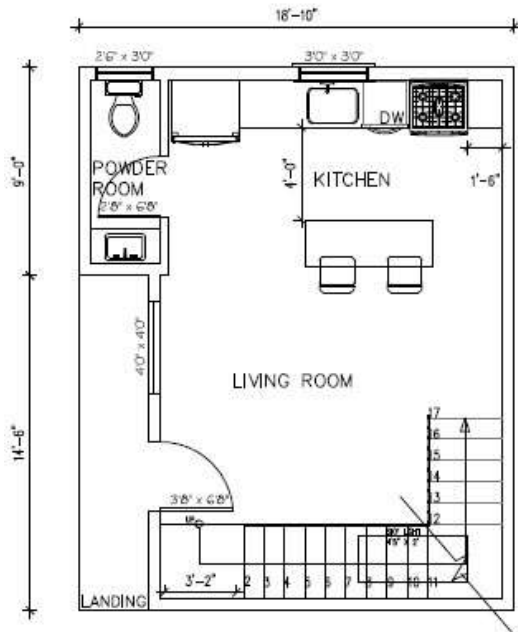
# Competitive Advantages

- Rapid Assembly
- Withstands heavy rain
- Mold and mildew proof
- Life Span: 70 years
- Fireproof: A1 Level
- Main factors affecting actual energy performance of a building: Thermal Conduction, Convection, Radiation & Mass
- Thermal Conductivity: 0.1035 W/m.K
  - (90mm thick wall has the same thermal conductivity as 350mm brick wall)

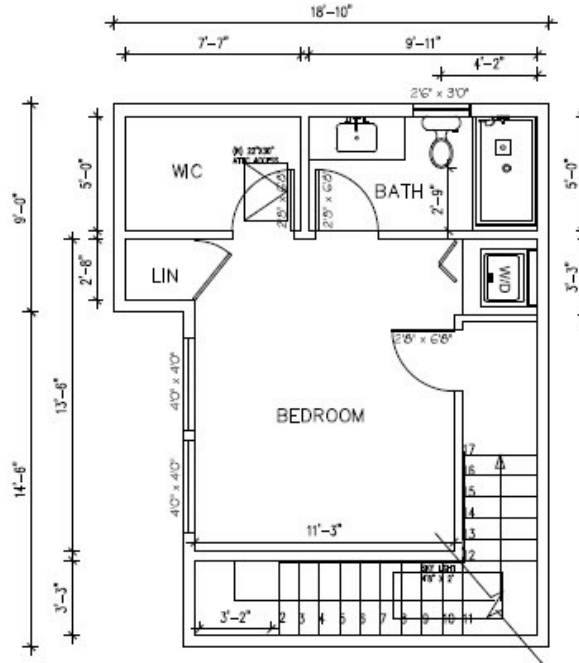
- Thermal Resistance: 0.869 m<sup>2</sup>·K/W
- Outperforms framed buildings due to the combination of reduced conduction & convection plus high thermal mass
- Snow Resistance: Snow pressure 8.219 KN/m<sup>2</sup>
- Earthquake Resistance: Up to Richter 9
- Sound Insulation: 40 dB
- Wind Load: Wind speed up to 140 MPH
- Wall Shock Resistance: 500 KG concentrated force
- In Wall Built-in Electrical Wire & Water Conduits

# Siena 800 SF Two Story

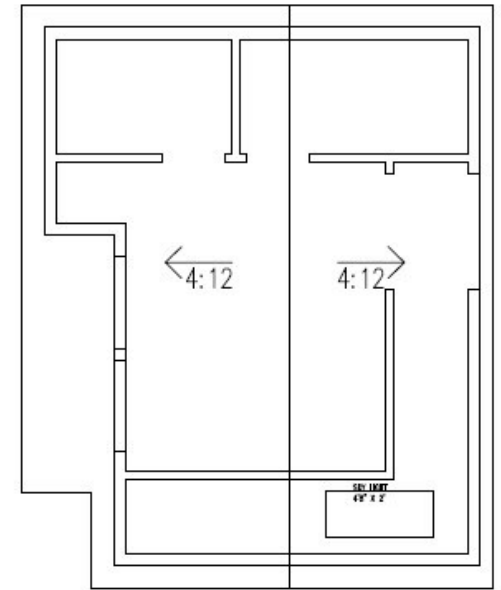
Rapid Assembly Steel & Foam Cement Building Kits



PROPOSED 1ST FLOOR PLAN  
400 SQ FT



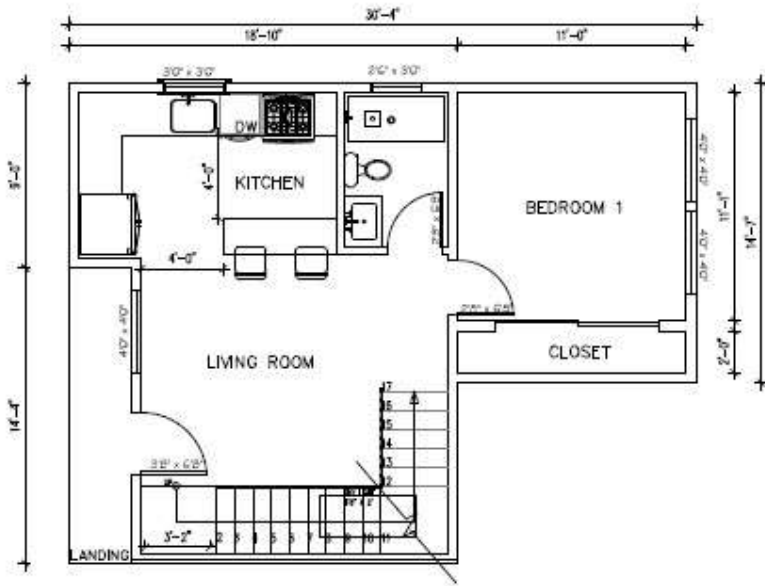
PROPOSED 2nd FLOOR PLAN  
400 SQ FT



PROPOSED ROOF PLAN

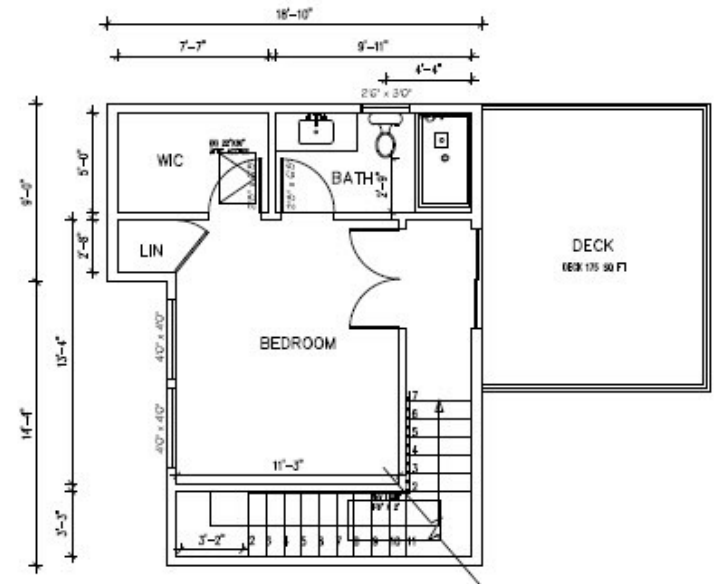


# Naples 960 SF Two Story



PROPOSED 1ST FLOOR PLAN  
590 SQ FT

## Rapid Assembly Steel & Foam Cement Building Kits

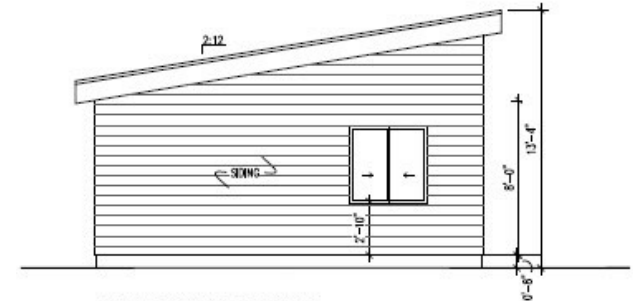
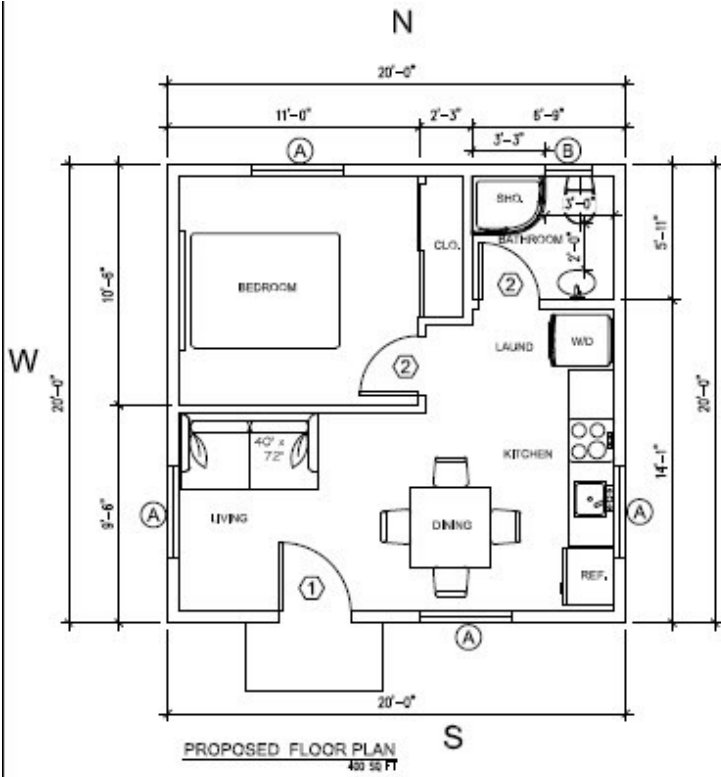


PROPOSED 2ND FLOOR PLAN  
490 SQ FT



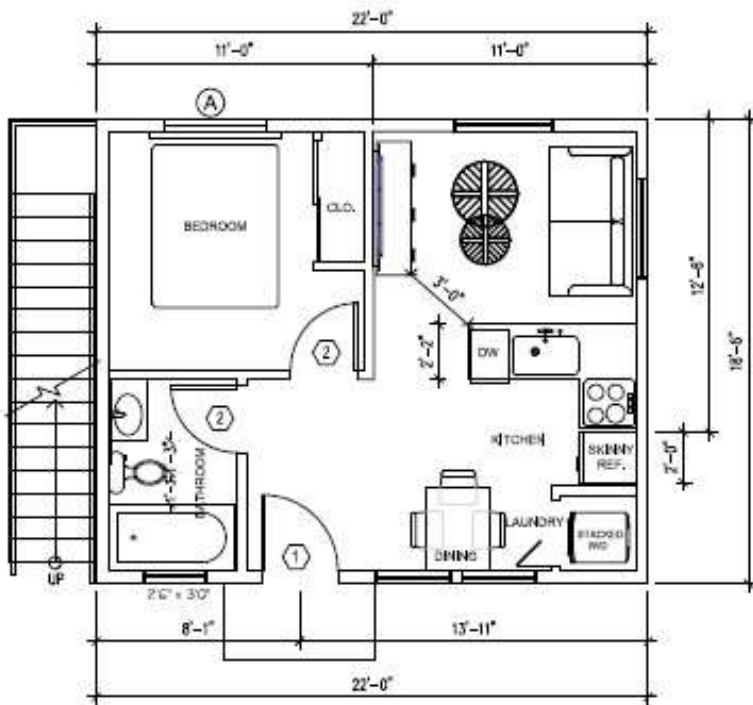
# Milan 400 SF One Story

Rapid Assembly Steel & Foam Cement Building Kits

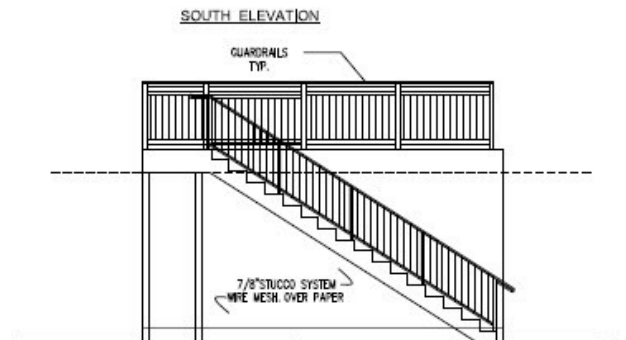
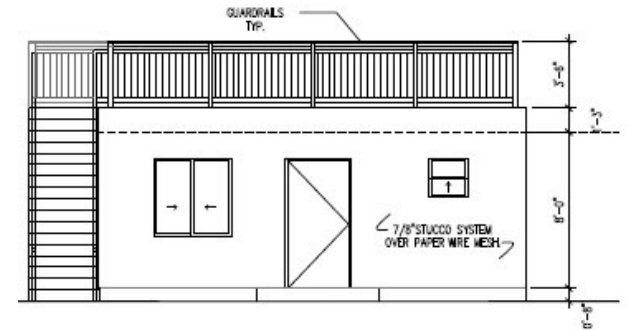


pan**L**bilt

# Florence 407 SF One Story

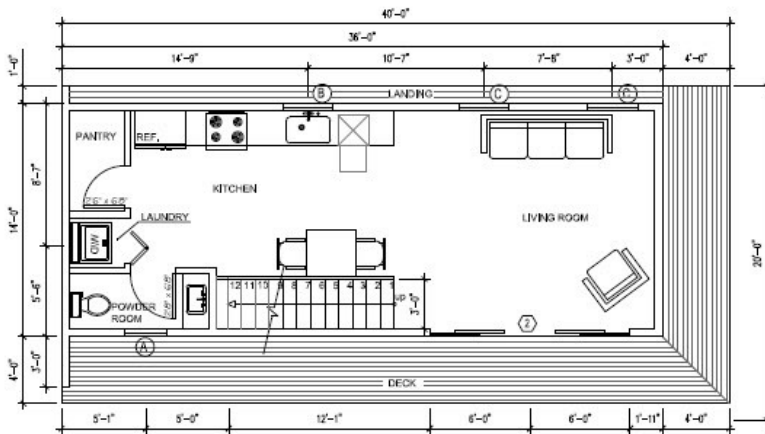


## Rapid Assembly Steel & Foam Cement Building Kits



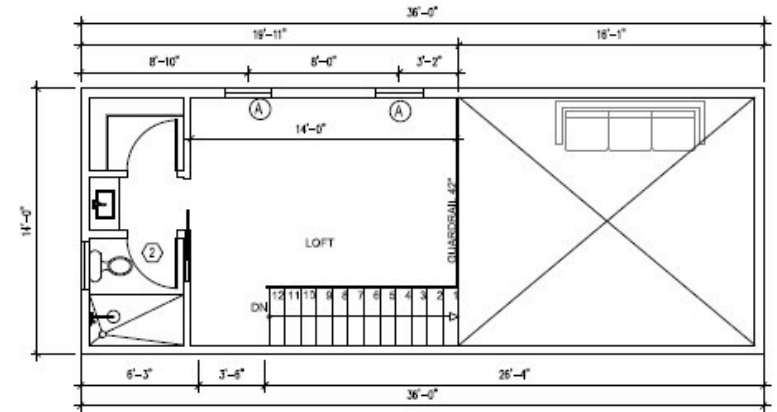
pan**L**bilt

# Turin 746 SF One Story



PROPOSED 1 ST FLOOR PLAN  
504 SQFT.

# Rapid Assembly Steel & Foam Cement Building Kits

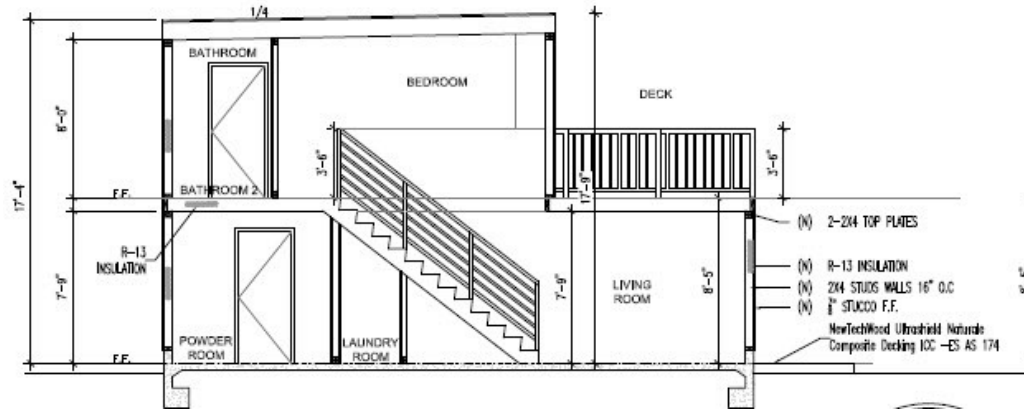
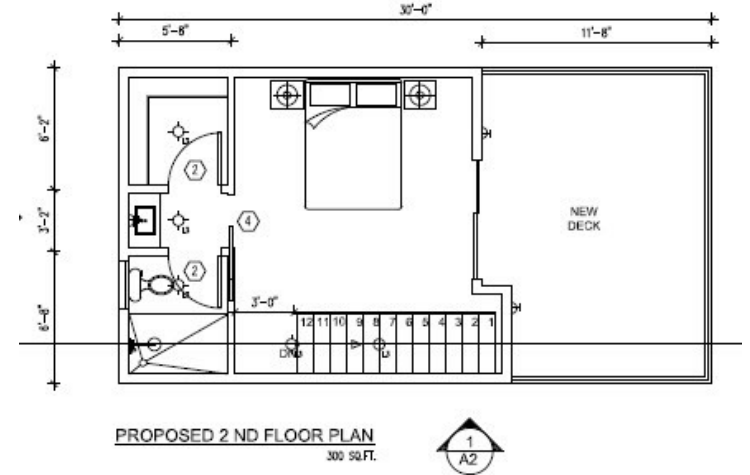
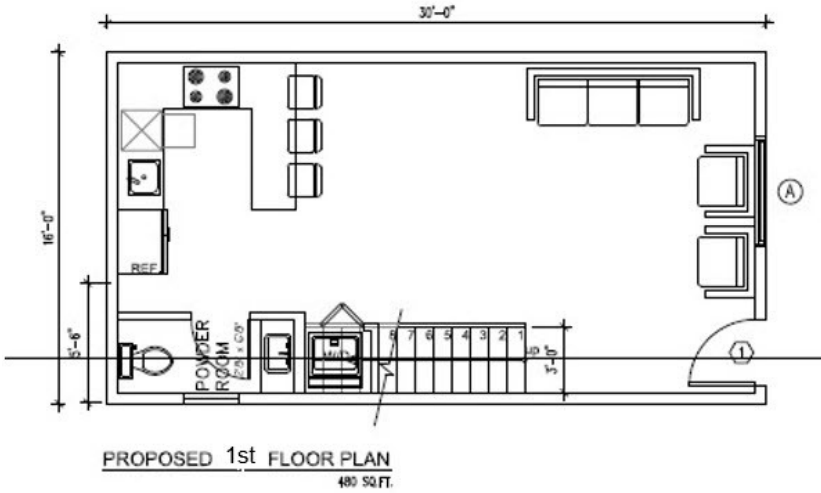


PROPOSED 2 ND FLOOR PLAN  
168 SQFT.



# Amalfi 780 SF Two Story

Rapid Assembly Steel & Foam Cement Building Kits



panLbit



Contact:

Genny Crane

[genny@PanLbilt.com](mailto:genny@PanLbilt.com)

310-463-8700

<https://www.PanLbiltAmericas.com>



pan**L**bilt

Rapid Assembly Steel & Foam Cement  
Building Kits